

4

3

2

1

| REVISIONS |      |                    |     |         |          |
|-----------|------|--------------------|-----|---------|----------|
| ECO NO.   | REV. | DESCRIPTION        | BY  | DATE    | APPROVED |
| 1255      | 0    | PRODUCTION RELEASE | NBS | 3/31/08 | SVA      |

# FACILITIES SPECIFICATONS:

## ELECTRICAL

### YES-3TA DOMESTIC

CONNECTION: SINGLE PHASE PLUG, NEMA 5-20P  
 VOLTAGE: 208VAC, SINGLE PHASE, 50-60 HERTZ  
 AMPERAGE: 10 AMPS SERVICE  
 WIRING: 3 WIRE (LINE-1, LINE-2, AND SAFETY GROUND)  
 DISCONNECT INTERRUPT: 10,000 AIC

### YES-3TAE EUROPEAN

CONNECTION: SINGLE PHASE PLUG, NEMA 6-20P  
 VOLTAGE: 220VAC, SINGLE PHASE, 50-60 HERTZ  
 AMPERAGE: 10 AMPS SERVICE  
 WIRING: 3 WIRE (LINE, NEUTRAL, AND SAFETY GROUND)  
 DISCONNECT INTERRUPT: 10,000 AIC

## MAIN VACUUM

7 CFM PUMPING SPEED, BASE PRESSURE OF 0.1 MTORR  
 CONNECTION: KF 25  
 MAXIMUM TEMPERATURE: 150°C

## HIGH PRESSURE N2/CDA

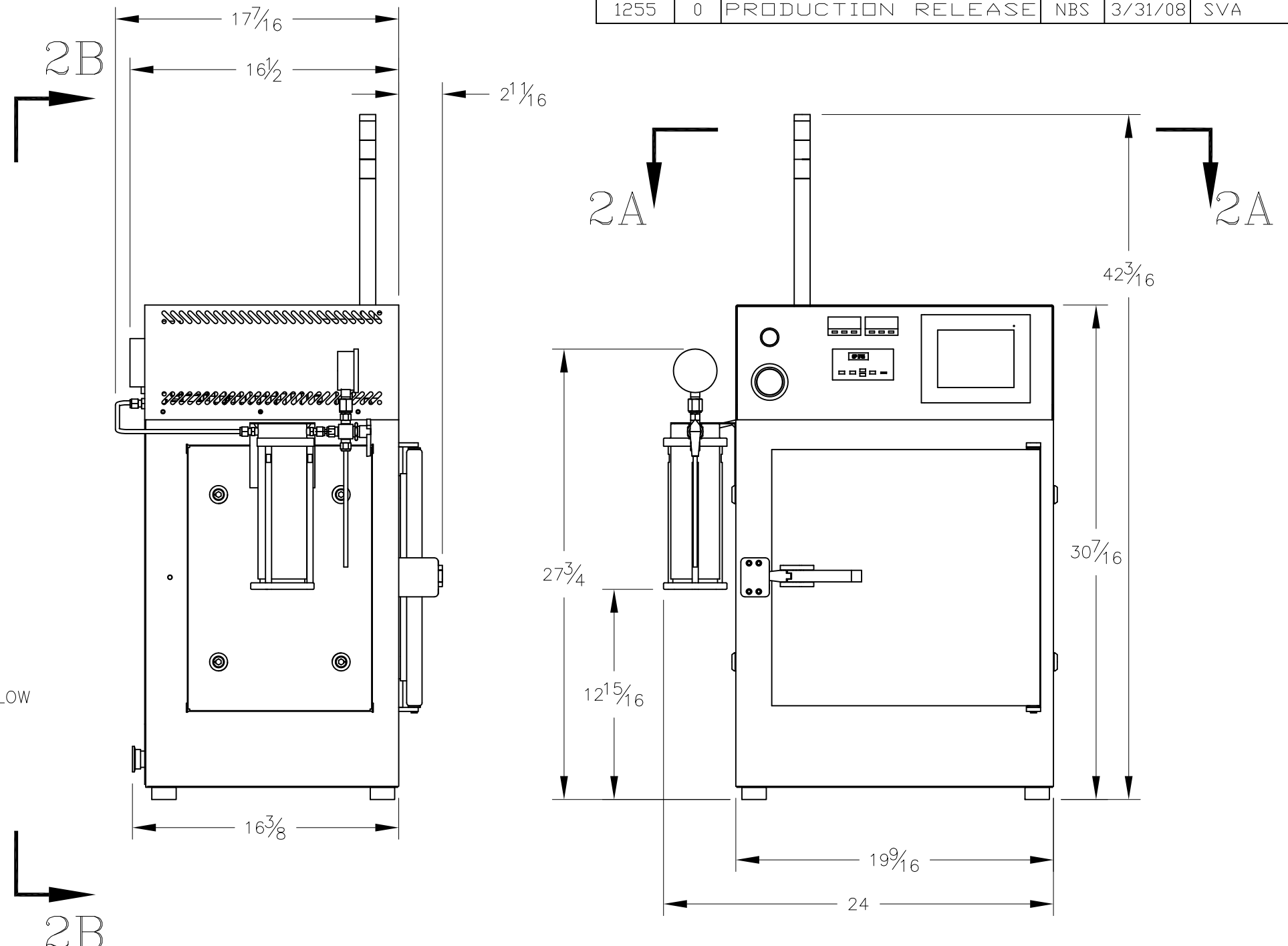
DRY FILTERED N2 OR CDA FOR PNEUMATICS  
 CONNECTION: 1/4" SWAGELOK FITTING  
 PRESSURE: 80-100 PSIG  
 MAXIMUM FLOW: 2 SCFM

## LOW PRESSURE N2

DRY, FILTERED N2 FOR CHAMBER VENTING AND PROCESS GAS FLOW  
 CONNECTION: 1/4" SWAGELOK FITTING  
 PRESSURE: 15-20 PSIG  
 MAXIMUM FLOW: 2 SCFM  
 PROCESS FLOW: 1.1 SCFM

## COOLING EXHAUST

CONNECTION: 3" DUCT COLLAR  
 VACUUM: -0.5 INCH WATER COLUMN  
 FLOW RATE: 20 SCFM  
 MAXIMUM TEMP: 90°F



B

B

A

A

2B

2A

2A

2B

THIS DRAWING IS THE PROPERTY OF YIELD ENGINEERING SYSTEMS, INC. AND IS LOANED WITH THE EXPRESS AGREEMENT THAT THE DRAWING AND INFORMATION CONTAINED THEREIN WILL NOT BE REPRODUCED OR COPIED IN WHOLE OR IN PART OR TRANSMITTED TO OTHERS DIRECTLY OR INDIRECTLY EXCEPT UPON WRITTEN PERMISSION FROM YIELD ENGINEERING SYSTEMS, INC. THE ACCEPTANCE OF THIS DRAWING WILL BE CONSTRUED AS AN ACCEPTANCE OF THE FOREGOING.

|             |         |                                       |                      |         |
|-------------|---------|---------------------------------------|----------------------|---------|
|             |         | TOLERANCES UNLESS OTHERWISE SPECIFIED | APPROVALS            | DATE    |
|             |         | DECIMAL .XX ± .02                     | DWN NBS              | 3/31/08 |
|             |         | ANGULAR ± 1°                          | CHK                  |         |
|             |         | FRACTIONAL ± 1/32                     | ENG NBS              | 3/31/08 |
|             |         | MATERIAL                              | APPVD SVA            | 4/7/08  |
| NEXT ASSY   | USED ON | FINISH                                |                      |         |
| APPLICATION |         |                                       | DO NOT SCALE DRAWING |         |

**YIELD ENGINEERING SYSTEMS, INC.**

TITLE: **FACILITIES YES-3TA/YES-3TAE**

SIZE: B DWG NO.: 610-2735-21 REV.: 0

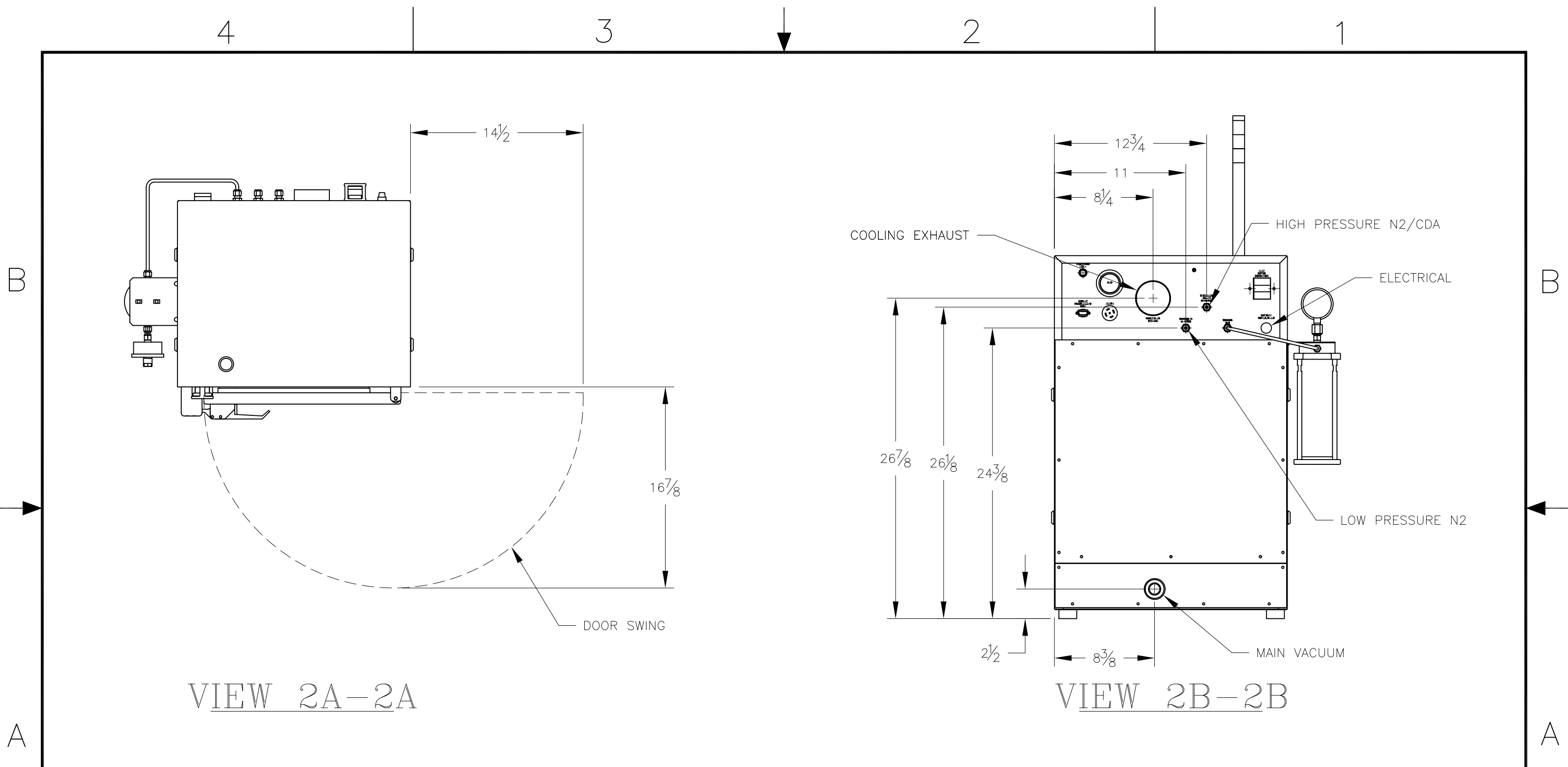
SCALE: 1=8 SHEET 1 OF 2

4

3

2

1




VIEW 2A-2A

VIEW 2B-2B

THIS DRAWING IS THE PROPERTY OF YIELD ENGINEERING SYSTEMS, INC. AND IS LOANED WITH THE EXPRESS AGREEMENT THAT THE DRAWING AND INFORMATION CONTAINED THEREIN WILL NOT BE REPRODUCED OR COPIED IN WHOLE OR IN PART OR TRANSMITTED TO OTHERS DIRECTLY OR INDIRECTLY EXCEPT UPON WRITTEN PERMISSION FROM YIELD ENGINEERING SYSTEMS, INC. THE ACCEPTANCE OF THIS DRAWING WILL BE CONSTRUED AS AN ACCEPTANCE OF THE FOREGOING.

|                                       |         |
|---------------------------------------|---------|
| TOLERANCES UNLESS OTHERWISE SPECIFIED |         |
| DECIMAL                               | ANGULAR |
| .XX ± .02                             | ± 1°    |
| .XXX ± .010                           |         |
| FRACTIONAL ± 1/32                     |         |
| MATERIAL                              |         |
| FINISH                                |         |

|   |             |              |
|---|-------------|--------------|
|  YIELD ENGINEERING SYSTEMS, INC. |             |              |
| TITLE   |             |              |
| FACILITIES  |             |              |
| YES-3TA/YES-3TAE  |             |              |
| SIZE  | DWG NO.     | REV.         |
| B   | 610-2735-21 | 0            |
| SCALE 1=8   |             | SHEET 2 OF 2 |